

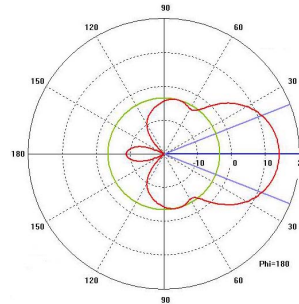
## 5 GHz Panel Antenna

Flat panel antennas for 5GHz. Due to the relatively small HPBW this antenna is most suitable for point-to-point communications. Comes with mounting hardware, tiltable. Can be mounted for vertical or horizontal polarisation. Compact design, good for outdoor use.

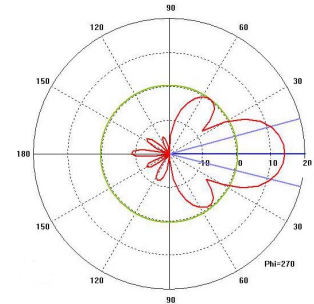


## PA 5000-12

Kompakte Flachantenne für 5GHz. Durch den geringen Öffnungswinkel sind diese Antennen gut für Punkt-zu-Punkt Verbindungen (Richtfunk) geeignet. Mit Mast/Wandhalter, dreh- und neigbar. Für Außeneinsatz geeignet.



H Plane

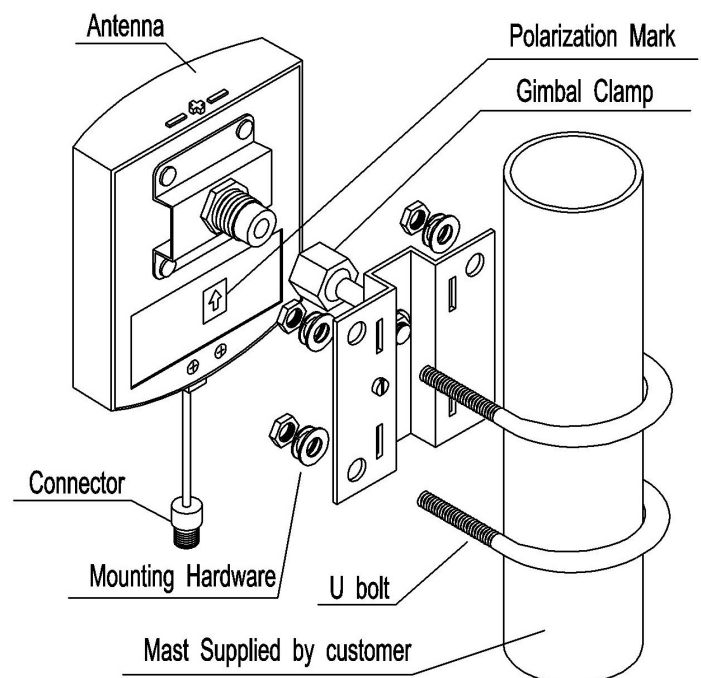


E Plane

## Specifications

Model	PA-5000-12
Freq.Range	5100 to 5850 MHz
Bandwidth	750 MHz
Gain	14 dBi
Beamwidth	H:43° E:30°
F/B Ratio	≥20 dB
VSWR	≤1.8
Impedance	50 Ohm
Polarization	Vertical
Max.Power	50 W
Connector	N female
Dimension	125×97×30mm
Weight	220 gr without bracket
Mast Diameter	40 to 50 mm
part no.	18710.12

## Montage / installation sketch



## WiMo Antennen und Elektronik GmbH

Am Gäxwald 14, D-76863 Herxheim Tel. (07276) 96680 FAX 9668-11  
<http://www.wimo.com> e-mail: [info@wimo.com](mailto:info@wimo.com)