

**Logperiodische Breitbandantenne,  
700-900 MHz / 1700-2700 MHz**  
Best.Nr. 60065.01

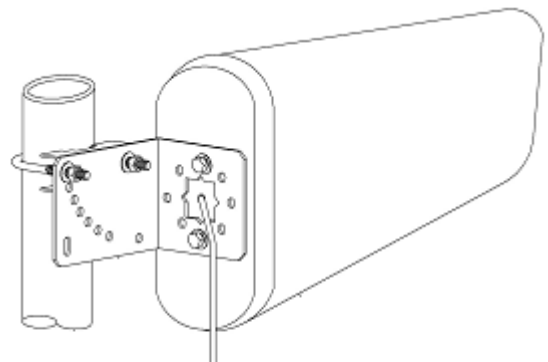


Breitband Logperiodic Antenne für 868MHz Datenfunk, D/E-Netz, UMTS, LTE und W-LAN. Die Antenne hat 2m Low Loss Kabel mit SMA-Steckern angeschlossen und kann so auf die meisten Modems, Router, Accesspoint direkt angeschlossen werden. Zum Lieferumfang gehört eine Neigehalterung.

Broadband Logperiodic antenna for 868MHz, GSM900, GSM1800, 3G, 4G and WiFi. The antenna has 2m Low Loss cable connected with SMA (male) connectors and can be connected directly to most modems, routers and Accesspoints. Supplied with a down tilt mount.

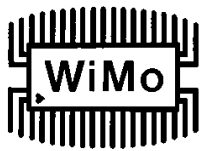
**Specifications**

Model	60065.01			
Freq.Range-MHz	698-800	800-960	1700-2700	
Beamwidth	E-°	65	60	50
	H- °	85	85	60
F/B Ratio-dB	≥15	≥20	≥20	
Gain-dBi	7.5	8.5	10	
VSWR	≤1.5			
Impedance-Ω	50			
Polarization	Vertical			
Max.Power-W	100			
Connector	2m cable with SMA male			
Dimensions-mm	293×210×65			
Weight-Kg	0.92			
Mast Diameter-mm	40 ... 50 dia.			
Note: When installing, you should drill a small hole into the radome at the lowest point, so that humidity may come out.				

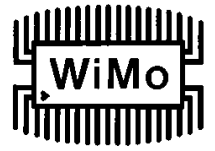


**WiMo Antennen und Elektronik GmbH**

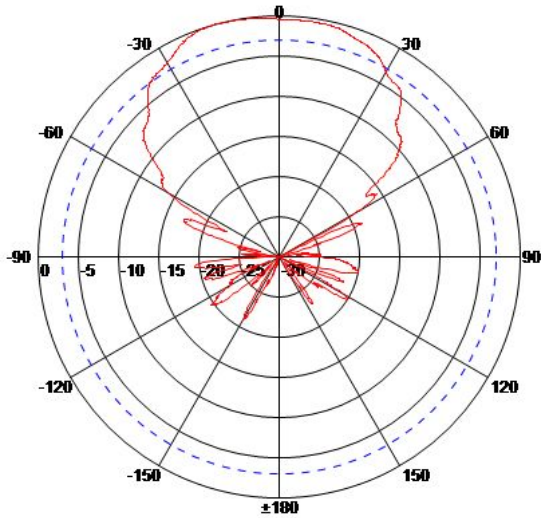
Am Gäxwald 14, D-76863 Herxheim Tel. (07276) 96680 FAX 9668-11  
http://www.wimo.com e-mail: info@wimo.com



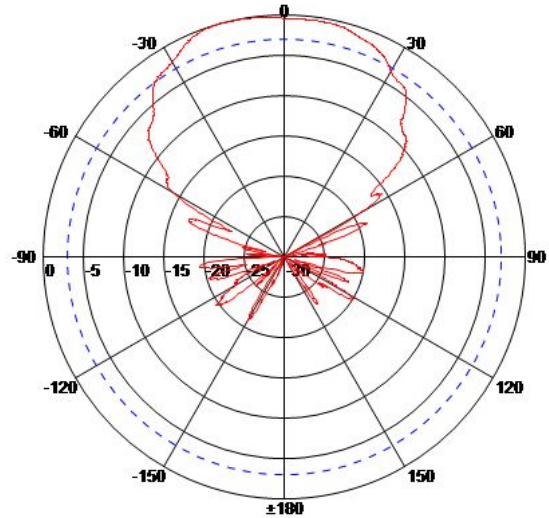
Logperiodische Breitbandantenne,  
700-900 MHz / 1700-2700 MHz  
Best.Nr. 60065.01



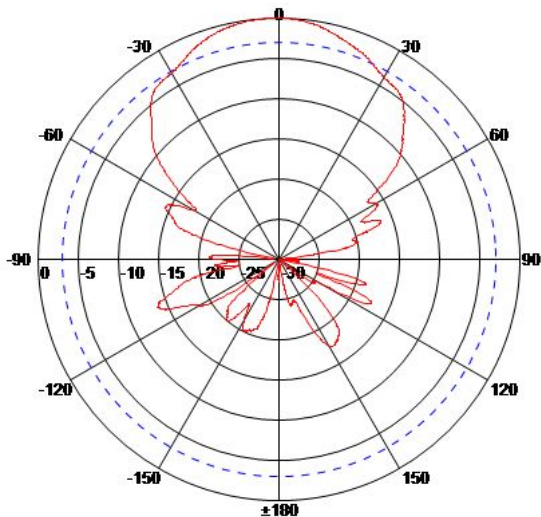
E-Plane 800MHz



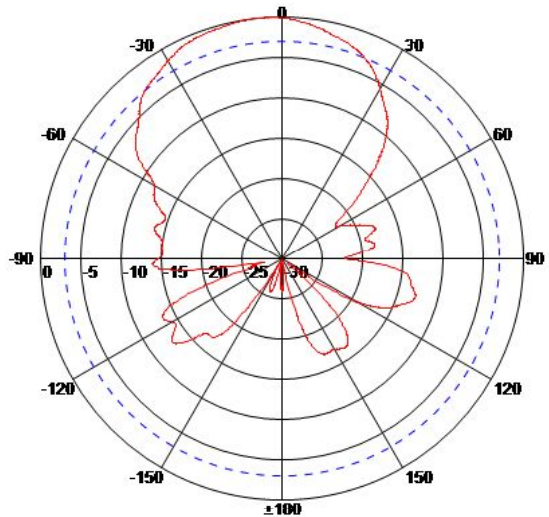
H-Plane 800MHz



E-Plane 2500MHz



H-Plane 2500MHz



**WiMo Antennen und Elektronik GmbH**

Am Gäxwald 14, D-76863 Herxheim Tel. (07276) 96680 FAX 9668-11  
<http://www.wimo.com> e-mail: [info@wimo.com](mailto:info@wimo.com)