

# LP900™ Series

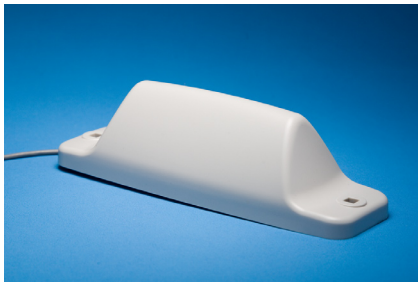
The LP900 series, a low profile mobile phone antenna designed to meet the industrial demands on high RF-performance with multi installation capabilities. It's durable design and low profile makes it ideal to use where a discrete and reliable installation is required. The LP900 antenna is a ground plane independent antenna enabling a wide range of installations on different materials, perfect for M2M applications.

- **Flexible five band antenna – 868/900/1800/1900/2100MHz**
- **Excellent RF-performance**
- **Low profile and durable design**
- **Verified according to IP44**
- **Ground plane independent enables easy installation**
- **Different versions available:  
installation with center screw  
installation with two fixing screws with  
extra electrical isolation**
- **Based upon Smarteq Wireless RF technology**
- **All versions RoHS compliant**





LP900



LP901



LP902

## Specifications

### Electrical

Frequency	868-960/1710-2170MHz
Impedance	Nominal 50ohm
Polarization	Linear vertical
VSWR	Low Band <2.5:1 High Band <2.5:1
Gain	Low Band 0dBd (2,15 dBi) High Band 2dBd (4,15dBi)
Max Power	10W
DC short antenna	
Ground plane independent	
Extra electrical isolation according to SS-EN 61010 for LP901 and LP902	

### Mechanical

Dimension	LP900: 136x48x42mm (LxWxH) LP901: 162x50x45mm (LxWxH) LP902: 140x52x45mm (LxWxH)
Weight	~100g
Installation	LP901 & LP901: 2 fixing screws LP902: center screw mount Max. material thickness 3,5 Installation hole diameter 16-19mm
Cable	1m, RG316, other on request
Connector	SMA(m), other on request
Material	ASA, PC/ABS
Color	Grey, black on request
Water ingress	LP900 & LP902: According to IP44 when installed LP901: IP65

### Environmental

Temperature	-40°C to +70°C
-------------	----------------

### Quality System

ISO/TS 16949 and ISO14001

Smarteq reserves the right to change specifications without prior notice.

550021B

Smarteq develops and supplies high-quality antennas and antenna systems for the wireless transfer of speech and data, communication to and from vehicles and machine to machine. Our staff is fully focused on developing high-performance antennas that will continue to set new standards of excellence that will exceed our customers' expectations

**SMARTEQ™**  
■■■■■ antennas

**Smarteq Wireless AB**

P.O. Box 4064 | SE-182 04 Enebyberg | Sweden

[www.smarteq.com](http://www.smarteq.com)