

PA-2408B

2.4GHz Wall Mount Antenna



Applications

- 2.4 GHz WLAN System
- 2.4GHz ISM Band
- WiFi System
- Point to Point or Point to Multipoint

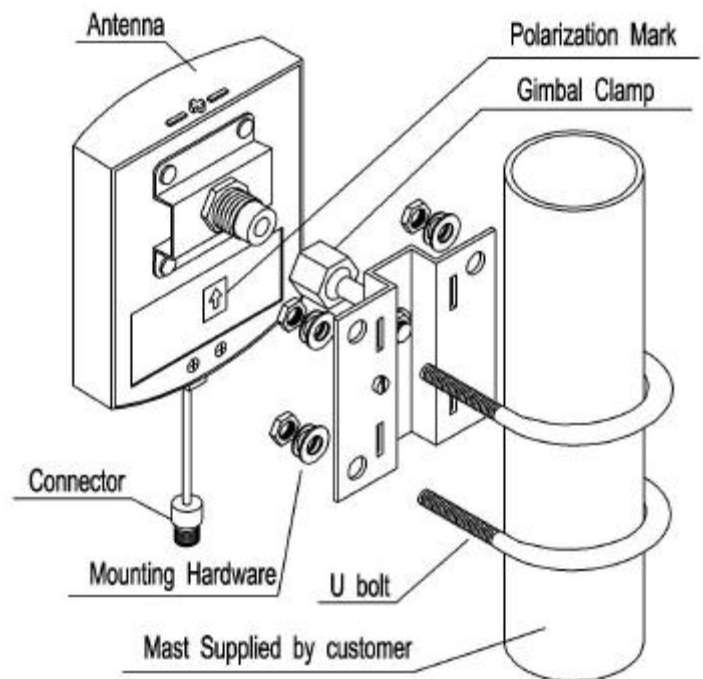
Features

- Low VSWR
- Compact Size
- Good Appearance
- All Weather Operation

Specifications

p/n	18627
Freq.Range-MHz	2400 to 2483
Bandwidth-MHz	83
Gain-dBi	8.5
Hor.Beamwidth-°	80
Ver.Beamwidth-°	60
F/B Ratio-dB	20
VSWR	1.5
Impedance-Ω	50
Polarization	Vertical
Max.Power-W	50
Connector	N Female
Dimensions-mm	125x97x30
Weight-g	210
Pole Diameter-mm	40-50

Installation



WiMo Antennen und Elektronik GmbH

Am Gäxwald 14, D-76863 Herxheim Tel. (07276) 96680 FAX 9668-11

<http://www.wimo.com>

e-mail: info@wimo.com