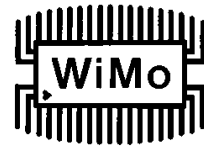


Panelantenne 2,4 / 5 GHz

2x MIMO Best.Nr. 18665.2



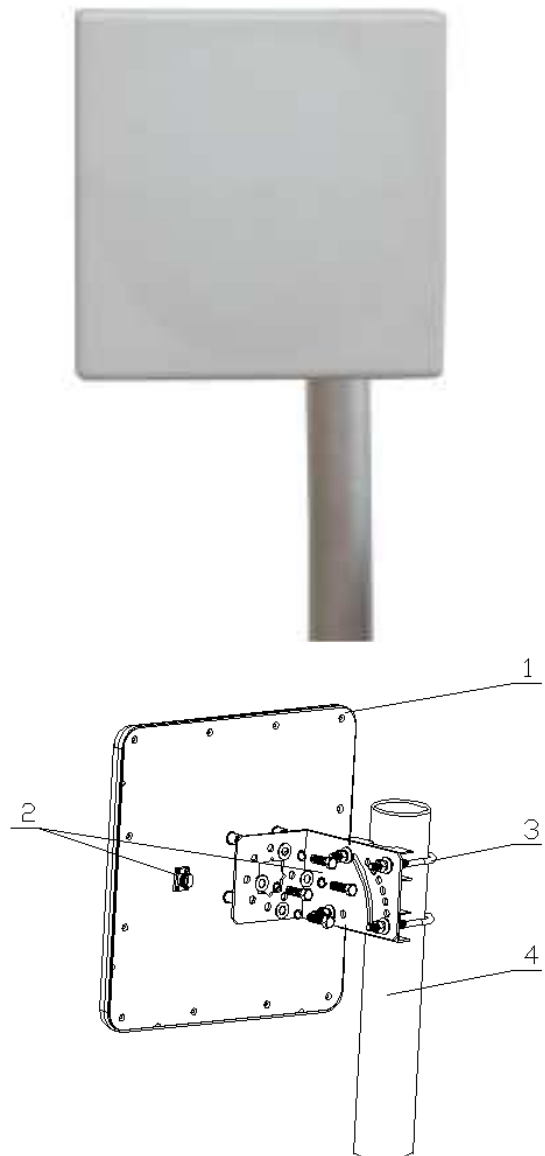
Flache Panelantenne für W-LAN im 2,4 und 5 GHz Bereich. Unterstützt den 802.11a/b/g/n Standard. Die Antenne arbeitet nach dem MIMO - Prinzip. Zwei getrennte Antennensysteme, zwei Anschlüsse.

Small panel antenna for 2,4 and 5 GHz WiFi. This antenna supported the 802.11a/b/g/n standards. The antenna works by the MIMO principle. 2 separate antennas inside, 2 connectors.

Specifications

Model	18665.2	
Freq.Range	2400-2483	5150-5850
Bandwidth	83 MHz	700 MHz
Gain	10 dBi	11 dBi
Beamwidth	E:30° H:65°	E:25° H:50°
Port Isolation	≥28 dB	
F/B Ratio	≥30 dB	
VSWR	≤1.8	
Impedance	50 Ω	
Polarization	1x vertical, 1x horizontal	
Max.Power	20 W	
Connector	2x N female	
Dimensions	261×261×35 mm	
Weight	1.15 kg	
Mast Diameter	40 to 50 mm	
Temperature Range	-40 - 75°C	
IP Protection Class	IP55	
Humidity	90-95%	

1. Antenna
2. Connector
3. Bracket
4. Mounting Mast



WiMo Antennen und Elektronik GmbH

Am Gäxwald 14, D-76863 Herxheim Tel. (07276) 96680 FAX 9668-11
<http://www.wimo.com> e-mail: info@wimo.com