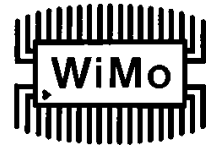


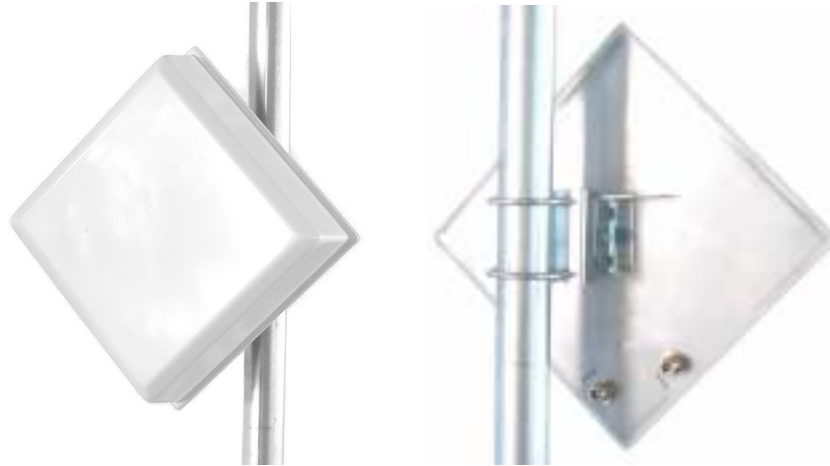


## Dualpolarity Flachantenne f. LTE

Best.Nr. 18707.8DUAL



Kleine und damit unauffällige Dual-Polarity Richtantenne für LTE Low Band (790-860 MHz), gut als CPE-Antenne geeignet. Enthält 2 getrennte Antennensysteme (dual slant), Polarisation  $\pm 45^\circ$ . Anschluß 2x N-Buchse.



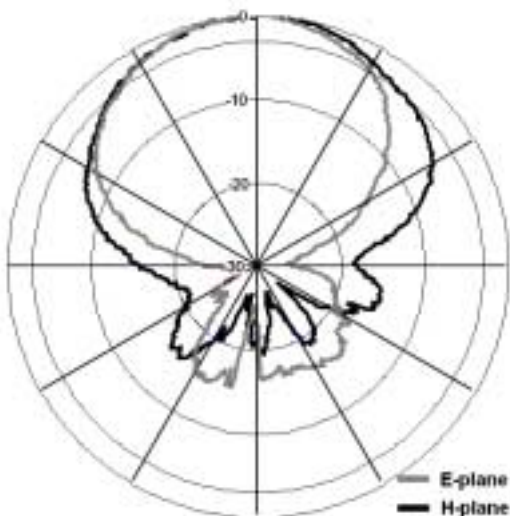
### Electrical parameters

Frequency range	790 – 880 MHz
Gain (at center frq.)	V: 8.5 dBi H: 8.5 dBi
VSWR	<2
3dB beam width	E: 75° H: 65°
Front-to-back ratio	>15 dB
Impedance	50 $\Omega$
Max input power	10 W
Polarization	Linear ( $\pm 45^\circ$ )

### Mechanical parameters

Cover material	White PVC
Mast bracket	Galvanised steel
Mast clamp	25 – 50 mm
Temperature	-30 °C ... +60 °C
Connector	2x N <sub>female</sub>
Dimensions	250x250x60 mm
Weight	1000 g

Pattern:



## WiMo Antennen und Elektronik GmbH

Am Gäxwald 14, D-76863 Herxheim Tel. (07276) 96680 FAX 9668-11

<http://www.wimo.com>

e-mail: [info@wimo.com](mailto:info@wimo.com)