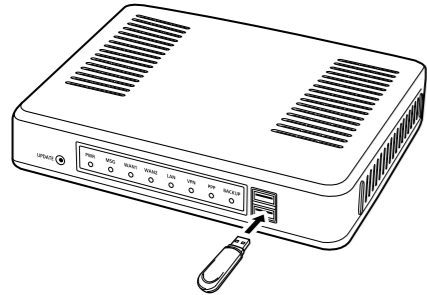


## Step 7 Automatic setting data load with a USB flash drive

The setting data or firmware can be automatically loaded into the IP1000C from a USB flash drive. It is useful to recover the configuration or to update the firmware.

- The USB flash drive is not supplied. Purchase separately.
- See the IP1000C INSTRUCTION MANUAL for details.



Securely insert the USB flash drive.

### About the USB flash drive

Interface: USB 2.0 or higher

Device : USB Mass Storage Class

Format: FAT16/FAT32

(The other formats such as exFAT, NTFS, and so on are not usable)

① Icom is not responsible for all the devices used with the USB flash drive.

### NOTE:

- A USB flash drive such as one with biometric authentication, or one with password protection is not supported.
- Turn OFF the IP1000C before inserting or removing the USB flash drive, to prevent data corruption.
- Either one of the USB slots accepts a USB flash drive, but only one slot can be used at a time.
- Securely insert the USB flash drive.
- **NEVER** remove the USB flash drive or turn OFF the IP1000C while transferring data. Doing so will cause data corruption or damage the USB flash drive.
- After the firmware update, check the firmware version on the setting screen to verify if the update has been correctly done.
- When importing a setting data from the USB flash drive to the IP1000C, the original setting data will automatically be saved as "bakdata.sav" file on the USB flash drive, as a backup.

## Step 8 The default network and system settings

Menu Item	Setting Screen	Setting Item	Item Name	Value
Network Settings	IP Address	IP Address	IP Address	192.168.0.1
			Subnet Mask	255.255.255.0
	DHCP Server	DHCP Server	DHCP Server	Disable
Management	Administrator	Administrator	Username	admin (fixed)
			Current Password	admin (lower case)
	Date and Time	NTP	NTP Client	Enable
			SNTP Server	SNTP Server
	USB	USB	USB Flash Drive	Enable
			USB Access Permission	✓ Firmware Update ✓ Backup/Restore
	Firmware Update	Automatic Update	Automatic Update	Enable

① All stated specifications and design are subject to change without notice or obligation.

Icom and the Icom logo are registered trademarks of Icom Incorporated (Japan) in Japan, the United States, the United Kingdom, Germany, France, Spain, Russia, Australia, New Zealand, and/or other countries. All other products or brands are registered trademarks or trademarks of their respective holders.

# ICOM CONNECTION GUIDE

## IP ADVANCED RADIO SYSTEM CONTROLLER IP1000C

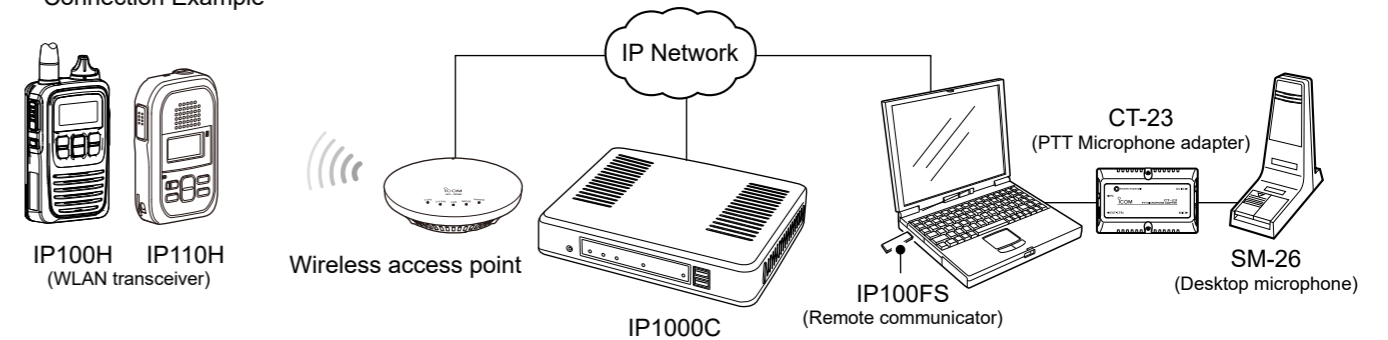
Thank you for choosing this Icom product.  
**READ ALL INSTRUCTIONS** carefully and completely before using this product.

## Step 1 Before Opening

The IP1000C and a wireless access point are required to use a WLAN transceiver.

- Setting is needed for each WLAN transceiver.

Connection Example



IP100FS enables you to remotely communicate with WLAN transceivers connected to your IP1000C from a PC through an IP network.

## Step 2 System requirements

### ◇ Supplied Accessories

- Power adapter .....
- Cushion sheet .....
- Ferrite EMI filter .....
- Precautions guide
- Connection Guide (This guide)

### ◇ Other requirements

- PC
- Ground wire
- LAN cable\*
- Wireless access point (purchase separately)

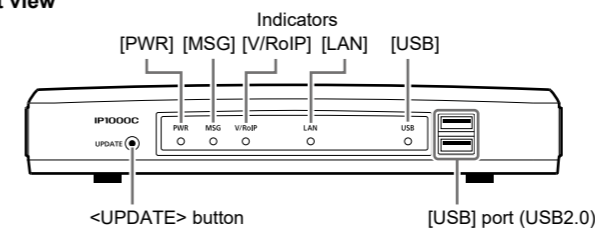
\* This product is compatible with the automatic discrimination function for the MDI (Straight)/MDI-X (Crossover). Therefore, even if you do not have a HUB, the IP1000C can be connected to the PC using the LAN cable.

### About the manual:

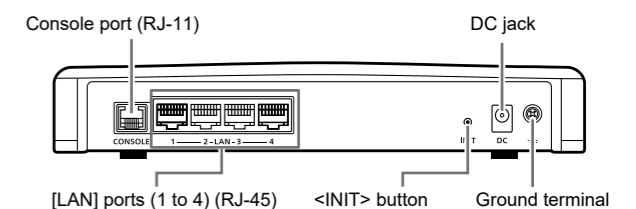
This Connection Guide explains the basic operation of the IP1000C. For Advanced features and instructions, see the INSTRUCTION MANUAL on the Icom website for details.  
<https://www.icomjapan.com/support/>

## Step 3 Panel description

### Front view



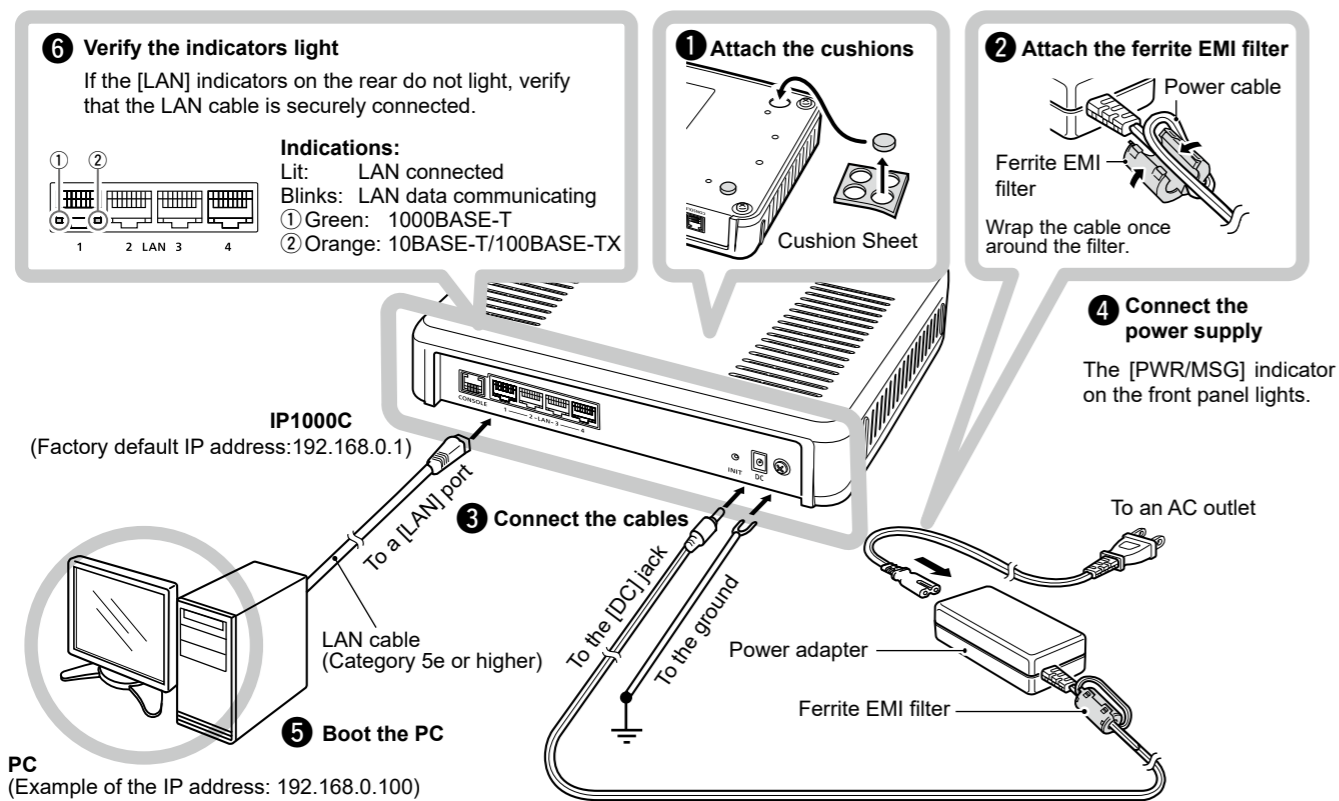
### Rear view



## Step 4 Connecting and turning ON the IP1000C

Connect the devices to the IP1000C in order of ① to ⑥.

① If the IP1000C is reset to the factory defaults, you must disconnect your PC from the network before doing ⑤.



### ⚠ WARNING!

To prevent electrical shock, television interference (TVI), broadcast interference (BCI) and other problems, ground the IP1000C through the ground terminal.

Make the distance between the ground terminal and ground as short as possible.

**NEVER** connect the ground terminal to a gas or electric pipe. This may result in an electrical shock or cause a fire.

### ⚠ WARNING!

**NEVER** use other than the specified power adapter. This may result in an electrical shock, cause a fire or damage the IP1000C.

### IP address for the PC

The IP1000C's IP address is set to "192.168.0.1" and the DHCP server to "Disable" as default. Set a fixed IP address on your PC (Example: 192.168.0.100) to access the IP1000C.

### ◇ The status indications

(See the PRECAUTIONS guide for more details on the <INIT> and <UPDATE> buttons.)

Status	PWR	MSG	V/RoIP	LAN*1*2	USB	
Lit	Green	ON	(Online Update) A firmware update is ready	IP communication terminal registered (More than 1 registration)	LAN connected (1000BASE-T) (All connections)	USB port connected
	Orange	Booting	—	—	LAN connected (10BASE-T/100BASE-TX) (More than 1 connection)	—
Blinks	Green	Booting	(Online Update) Firmware downloading	—	—	Accessing the USB flash drive Green/Orange
	Orange	Booting	Initialization in progress/ <INIT> button Green/Orange	—	—	
Not lit	OFF	—	No registration	Not connected	—	

\*1 When 1000BASE-T/10BASE-T/100BASE-TX are mixed, the [LAN] indicator lights orange.

\*2 The data communication status for each [LAN] port can be checked with the [LAN] indicator on the rear panel.

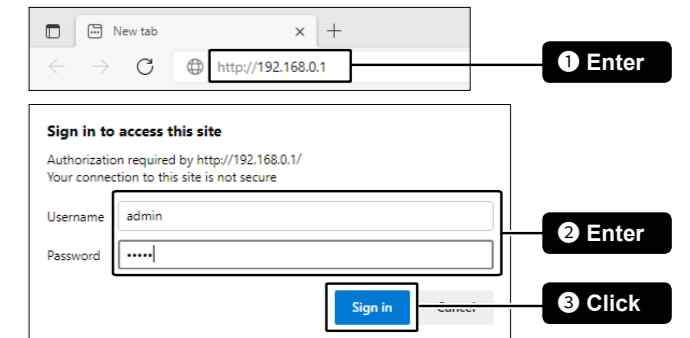
## Step 5 Configuring the network connection

Follow the procedures described below to access the IP1000C setting screen using a web browser.

① Activate the JavaScript and set to allow Cookies on your web browser to correctly display the setting window.

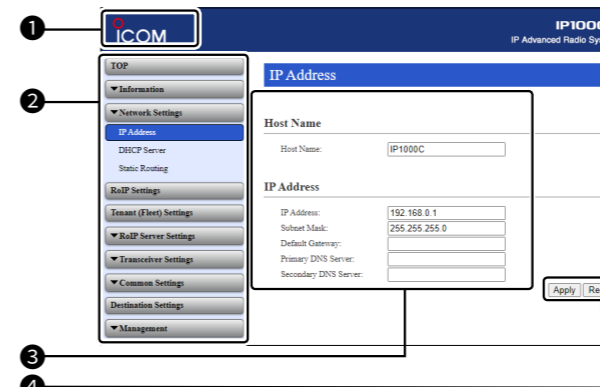
① Use a web browser Internet Explorer 11 or later. The setting screen may not be correctly displayed, depending on the browser.

- Enter the IP address of the IP1000C into the address bar of your web browser, and then press the [Enter] key.
  - The default IP address is "http://192.168.0.1".
  - The Login Authentication window is displayed.
- Enter "admin" (fixed username) and "admin" (default password) on the Login Authentication window, and then click <Sign in>.



### ◇ The IP1000C setting screen

See the IP1000C instruction manual for details.



### ① Link to the Icom web site

Click the Icom logo to open the Icom web site if your PC is connected to the Internet.

### ② Setting menu

Displays the window name list. When you click on a name, a list drops down where you select a desired setting item.

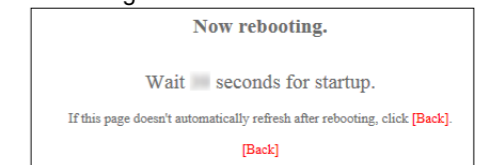
### ③ Setting window

Displays the settings and values when you click a setting item.

### ④ Setting buttons

Saves or cancels the entered settings. If "Do you want to reboot the system?" is displayed, click <OK> to reboot the IP1000C with the new settings.

- The following message is displayed while the IP1000C is rebooting.

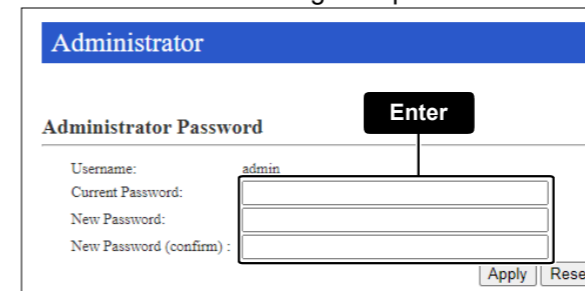


① If the setting screen does not automatically refresh, click <Back> about 40 seconds after "Now rebooting." has been displayed.

## Step 6 Customizing the administrator password

To prevent unauthorized access, change the administrator password first.

- Click [Management] menu, and then [Administrator].
- Fill out each box to change the password.



3. Click <Apply>.

① Enter the new administrator's password from now on.

### To prevent unauthorized access:

- Choose one that is not easy to guess.
- Use numbers, characters, and letters (both lower and upper case).

See the INSTRUCTION MANUAL for details on setting the password.

**NOTE:** If you lose your password, you will not be able to access the IP1000C's setting screen. To reset the password, you must reinitialize the IP1000C to factory defaults by operating the <INIT> button as described in the PRECAUTIONS guide.