

NEDSP1901-PCB Draft User Manual

Copyright & Disclaimer:

Copyright: This publication, including all photographs and illustrations is protected under international copyright laws, with all rights reserved. Neither this manual, nor any of the material within, may be copied or reproduced without the written consent of bhi Ltd.

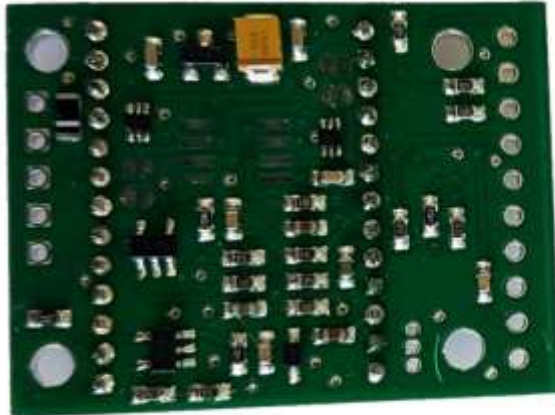
Disclaimer: The information in this document is subject to change without notice. bhi Ltd. makes no representations or warranties with respect to the contents hereof and specifically disclaims any implied warranties of merchantability or fitness for any particular purpose. Furthermore, bhi Ltd. reserves the right to revise this publication and to make changes from time to time in the content hereof without obligation of bhi Ltd. to notify any person of such revision or changes.

1. Introduction

The **NEDSP1901-PCB** module is an audio DSP noise cancelling module that is used to clean up noisy speech signals to give improved speech clarity in noisy conditions. The 1901 module is pin for pin replacement module for the discontinued NEDSP1061-PCB module. It operates with a similar specification but incorporates the latest bhi DSP noise cancelling technology and maintains virtually the same physical dimensions as the NEDSP1061-PCB.



DSP side of PCB



Rear side of pcb

1.1 NEDSP 1901 Module Features:

- Fully adaptive to changing noise environments
- Input and output level controls
- Virtually no distortion to speech signals
- Up to 40 dB noise reduction in 8 selectable levels
- Audio bandwidth 300Hz to 5KHz
- Noise Reduction may be preset or remotely set during operation.
- 7 to 18 Volt supply range
- Approximately 10 dB of signal gain with the ability to drive impedances of less than 1KOhm.
- Wide range of connection possibilities
- Mounting holes

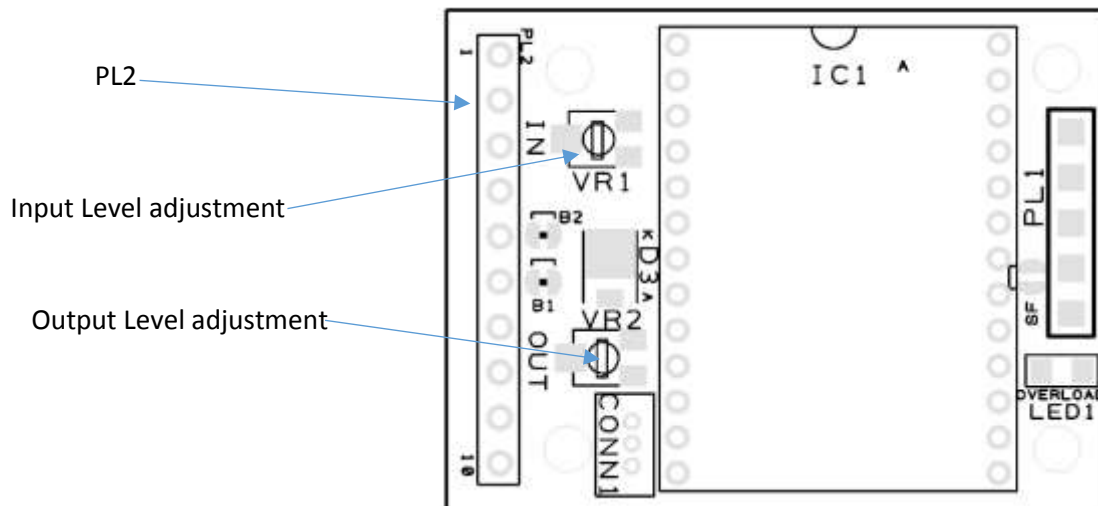
1.2 Limitations

This module is designed to pass speech. Other signals such as data, music and morse (CW) will, to some degree pass through, but the integrity of these signals cannot be guaranteed.

Like the 1061 it is designed to be placed in a low level audio path (up to 1V p-p) only, although there is a level adjustment on the module which will require adjustment. The output will not drive a loudspeaker or other high power load.

1.3 Module connection and Mounting

Connections to the module are made by a row of 10 plated through holes to one end which form PL2. The holes are on a 2.54 mm (0.1") pitch which allow the use of Straight or Right angle pin headers or direct wiring. This makes a flexible connection arrangement and allows the using to be mounted either vertically or horizontally, plugged in or soldered directly to the target system.



Pin No	Name	Description
1	N0	BCD lsb noise reduction bit 0
2	N1	BCD noise reduction bit 1
3	N2	BCD msb noise reduction bit 2
4	N/C	Do Not Connect
5	Vin	Vin Supply Voltage (5V to 20 V)
6	N/C	Do Not Connect
7	0v	0V connection
8	Noff	Noise Reduction On/Off pin
9	In	Audio Input
10	Out	Audio Output

Connections to the module are via PL2, as given in the table opposite.

Whichever method of connection is used, ensure that the PCB is supported by using at least 2 of the M2.5 mounting holes to be found at the corners of the board. It's recommended that Nylon Securing hardware is used to ensure that accidental shorts are avoided due to the fine nature of this PCB.

The Audio signal into the module is capacitor coupled to prevent DC offsets being affected.

An on-board voltage regulator allows the module to be used with a wide range of input voltages, but to keep the power dissipation (and heat) down, it is advisable to use as low as possible supply voltage. The power supply input is reverse polarity protected.

1.4 DSP Noise Reduction

The NEDSP1901 processes the incoming signal and uses known speech and noise patterns to differentiate the speech from the noise. The unwanted noise and interference is then attenuated to leave only speech.

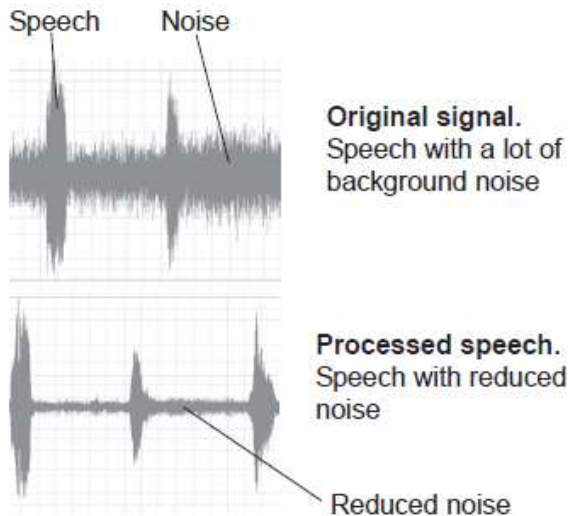


Figure 1 – Noise Cancellation

The module has the facility to be pre-set or adjusted during operation. Digital inputs control the functions. These incorporate internal pull-up resistors so they can be left floating when not in use.

The diagrams in Figure 1 (opposite) are taken from actual audio signals and illustrate how the signal is being processed.

2.0 Module Description

2.3 Pin Functions

The basic operation of the NEDSP pins are described below. More details may be found later in this manual.

Pins 1-3 DSP Filter level set -These pins allow remote setting of the noise cancellation level. If these pins are used, then ensure that the appropriate on-board pre-set solder jumpers are removed (JP1 – JP3).

Pin 5 Supply Voltage - Supply voltage 5 V to 15 V DC

Pin 7 0V - This is the 0V pin and acts as a Star Point for all Audio and Power Grounds.

Pin 8 Noise Reduction On/Off - Connecting this pin to 0V inhibits the noise cancellation. Leave this pin floating or tie it to +3.3 V to enable noise cancellation.

Pin 9 Audio Input - Audio Signal to be processed

Pin 10 Audio Output - DSP Processed signal from the module.

For optimum performance, keep all leads as short as possible. Use screened leads for the audio signal and make sure that the 0V pin is grounded correctly with all signal grounds being reference to this pin.

2.4 Controls

The audio level control potentiometers VR2 (Audi Out) and VR1 (Audio in) provide adjustment to audio levels entering and leaving the module. Both controls are pre-set at the factory such that a 1V p-p input provides a 1V p-p output with the Noise Reduction disabled.

To set the Input Level correctly, adjust VR1 until the 'Overload' indicator (LED1) just illuminates. Then back off the potentiometer until the LED extinguishes. Turning the potentiometers clockwise increases the levels.

2.5 Electrical Characteristics

Output impedance: 1k Ohms typical

Input impedance: 7.5k Ohms typical

Analogue Characteristics					
Parameter	Description	Min.	Typ.	Max.	Units
Vin	Supply Voltage	5	8	15	V
Iin	Supply Current		15	20	mA
In	Audio Input Signal	20	500		mV (rms)
Out	Audio Output Signal			1000	
Digital Characteristics					
Parameter	Description	Min.	Typ.	Max.	Units
VHigh	High Level Input Voltage	-	3.3	5	V
VLow	Low level Input Voltage	0.8	-	-	V

3.0 Installation

The NEDSP1901 module is inserted into the path of the noisy audio. Adjusting the Input and Output level controls allows the module to appear transparent to the audio signal level. Connections to the pcb can be made via PL2 using a standard Harwin type 0.1" pitch pin header.

The NEDSP1901 requires a minimum signal level of 50mV rms or greater for optimum performance. Signals lower than this may be used but the noise cancellation performance will be degraded as the

signal level drops. If the module is to be used with low level microphones, the signal will require pre-amplification. The Output level control may be used to attenuate the signal back down to the original signal level.

4.0 Functions

4.1 Noise Reduction Levels

8 Levels of noise reduction are available. The amount of noise and tone reduction is shown in the table below:

Level	Tone Reduction	White Noise Reduction
1	4dB	8dB
2	5dB	12dB
3	6dB	16dB
4	8dB	20dB
5	16dB	25dB
6	21dB	30dB
7	25dB	35dB
8	65dB	40dB

Notes:

1. When processing signals with high levels of noise using the higher levels of Noise reduction, the processed signal may sound a little strange. This quite normal with this type of signal.
2. Due to the adaptive nature of the noise cancellation algorithm, a small delay may be experienced when the audio signal varies in the noise. For optimum performance the module should be provided with a constant signal, for example if the module is installed into a system employing a push to talk system, then the module should be inserted in the audio path before any switching. Thus the signal will always be available for the module to adapt to.

4.2 Setting different filter levels

The levels are set by applying a BCD code to three solder jumpers on the underside of the module. The module can be controlled with a microcontroller. As the DSP employs internal pull-ups, it is not necessary to drive the microcontroller pins high, they can be placed in a high impedance state.

4.3 Remote setting of DSP filter level

Remote setting of the DSP level may be achieved through the PCB connections at PL2, this allows the filter level to be changed during operation. If the remote DSP settings are to be used, ensure that the solder jumpers are removed from NS0 through NS2 as shown below:

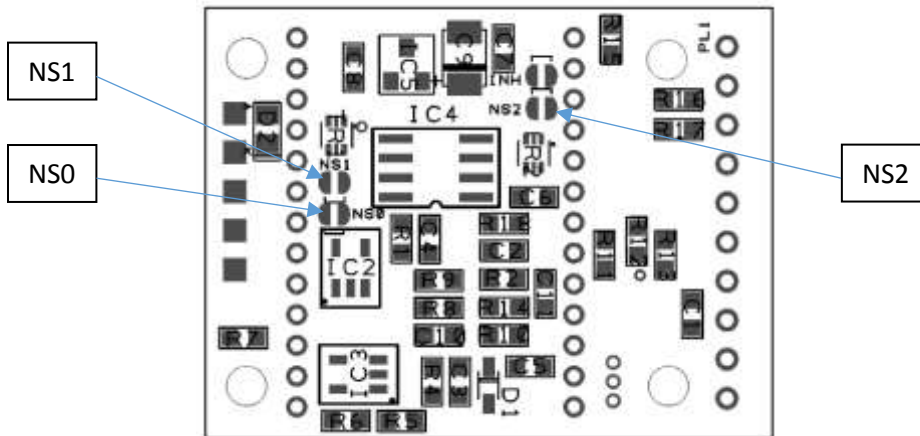
To set the DSP level remotely, connect the pins N0, N1 and N2 (PL2 pins 1, 2 and 3 respectively) as shown on the following page.

Level	N2	N1	N0
1	0 V	0 V	0 V
2	0 V	0 V	+3.3 V
3	0 V	+3.3 V	0 V
4	0 V	+3.3 V	+3.3 V
5	+3.3 V	0 V	0 V
6	+3.3 V	0 V	+3.3 V
7	+3.3 V	+3.3 V	0 V
8	+3.3 V	+3.3 V	+3.3 V

The DSP Module has internal pull-ups on its inputs, so any cell in the table containing +3.3 V may be taken up to or left open circuit.

4.4 Setting the Noise Reduction Level using the On-board Jumpers

The on-board Noise reduction selection jumper selectors are located on the underside of the Module as shown below. These jumpers are actually PCB pads that should be linked using a solder bridge. Caution should be used when carrying out this operation to ensure that other components and connections are not bridged as this could cause the module to malfunction or even fail.



Above - underside of the NEDSP 1901 module showing the on-board PCB pad jumpers

The Noise reduction Levels are selected as shown in the table opposite.

NOTE: Due to the logic inversion used within the module, External Control pins 1, 2 and 3 of PL2 should be linked to pin 7 of PL2.

Level	NS2	NS1	NS0
1	Open	Open	Open
2	Open	Open	Linked
3	Open	Linked	Open
4	Open	Linked	Linked
5	Linked	Open	Open
6	Linked	Open	Linked
7	Linked	Linked	Open
8	Linked	Linked	Linked

4.5 Noise Reduction On/Off

The module has the provision for remotely enabling and disabling the noise reduction, while in operation. The default setting for the module is noise reduction ON. This may be switched by the use of the noise cancellation on/off pin (PL2 pin 8). To inhibit noise reduction, connect this pin to 0V. To enable noise cancellation leave the pin unconnected.

bhi

Noise Cancellation Products

Contact details:

bhi Ltd
22 Woolven Close
Burgess Hill
West Sussex
RH15 9RR

Tel: +44 (0)1444 870333
Fax: +44 (0)845 2179936
Email: sales@bhi-ltd.com
Web: www.bhi-ltd.com