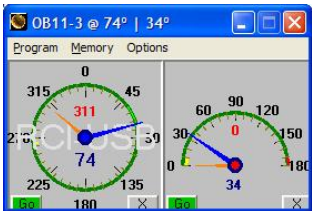


# ARS-USB

## Universal Rotator Interface



ARSVCOM Program

### Rotators Supported

Alliance HD73  
Create RC5-x series  
Create ERC-51  
Daiwa DR7500/7600R/X  
Daiwa MR750/MR300  
Emoto 1200 FXX  
Emotator EV-800DX  
Emotator 1102  
Giovannini (all models)  
Kenpro All models  
Pro.Sis.Tel "B" & "D" Serie  
HAM II/IV/T2X/HDR300  
Yaesu all models



- The ARS-USB can be connected with any rotator controller.
- It can be used as a replacement for the original controller.
- It includes a USB Port, and is detected at the computer as a COM/Serial Port.
- Windows XP, 7 (32/64 bits) or Linux and Mac OS X are supported.
- Emulates a Yaesu GS232A interface so most software programs will be supported.
- Rotators with a Brake and/or Speed control are supported.
- Reversal delay is supported and programmable.
- Jam detection and watchdog functionality are supported.
- Includes a 16x2 character LCD backlight and 4 buttons for manual control.
- A Bootloader module allows firmware upgrades via the USB Port.
- ARSVCOM program included: A graphical and friendly user interface.
- 2 models are available:
  - Azimuth
  - Azimuth & Elevation
- Windows XP, Vista, 7 (32/64 bits) or Linux and Mac OS X are supported.
- ARSVCOM license is included: A graphical and friendly user interface.
- Size: 180x190x70mm Weight: 1Kg aprox.

### More information

[www.interlanco.com](http://www.interlanco.com)  
[sales@interlanco.com](mailto:sales@interlanco.com)