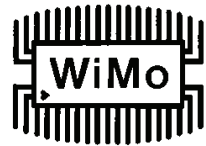




Stummelantenne (gewinkelt) 900 - 1800 MHz
Best.Nr. 17007.868SMA

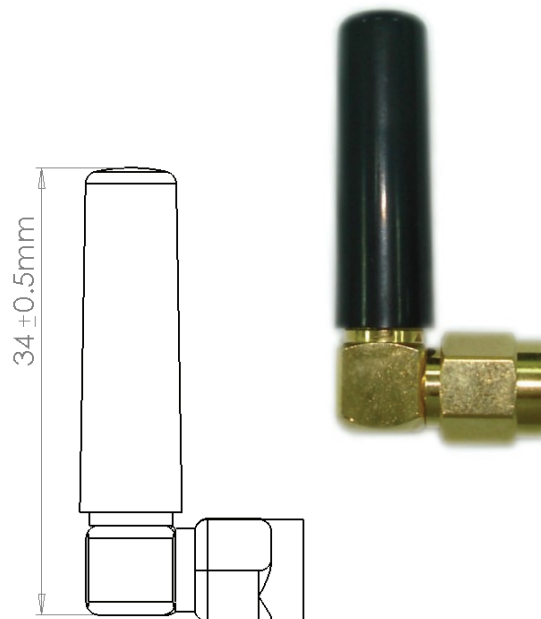


Kleine Stummelantenne für Nahfeldkommunikation im ISM- (868MHz) und GSM-Bereich (Quadband 900/1800/1900MHz). Geeignet für portable Geräte und Maschinen, klein und unauffällig.

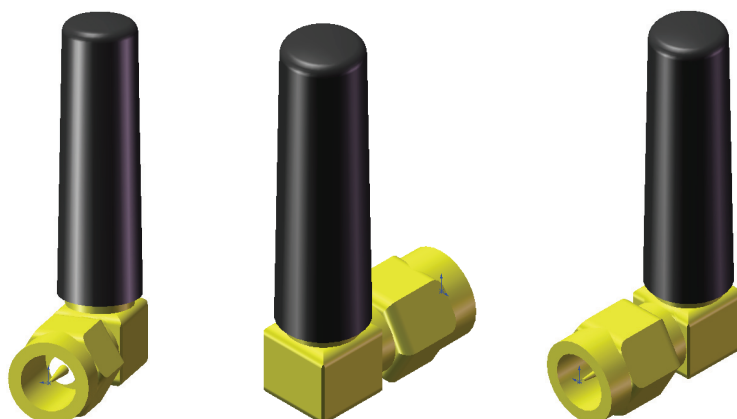
Small stubby antenna for short range communication in industrial environments. Usable for 868/900/1800/1900 MHz (Quadband, GSM, ISM). Suitable for portable equipment and machines, small and unobtrusive.

Specifications

Frequency Range	900 - 1900 MHz
VSWR	≤ 2.0
Impedance	50 Ω
Gain	0dBi
Polarization	Vertical
Power Handling	N/A
Beam Width	N/A
Connector	SMA MALE
Operation Temp.	-30° ~ +60°
Material	Radome: PC
Dimension (L*W*H)	34*8 \varnothing mm
Weight	7g \pm 1g
Color	Black
part no.	17007.868SMA



3D views



WiMo Antennen und Elektronik GmbH

Am Gäxwald 14, D-76863 Herxheim Tel. (07276) 96680 FAX 9668-11

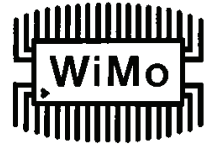
<http://www.wimo.com>

e-mail: info@wimo.com

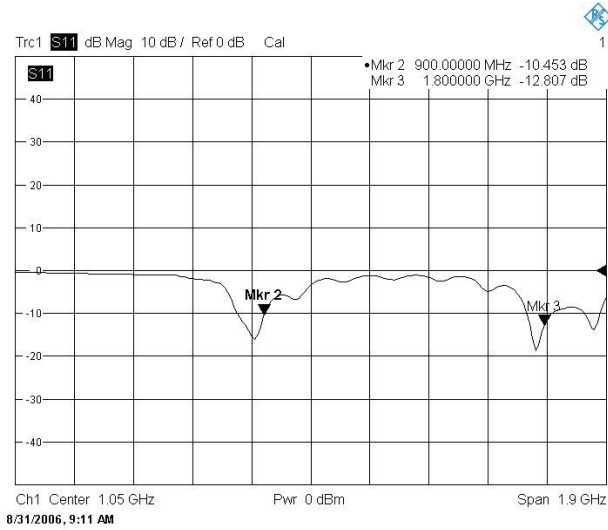


Stummelantenne (gewinkelt) 900 - 1800 MHz

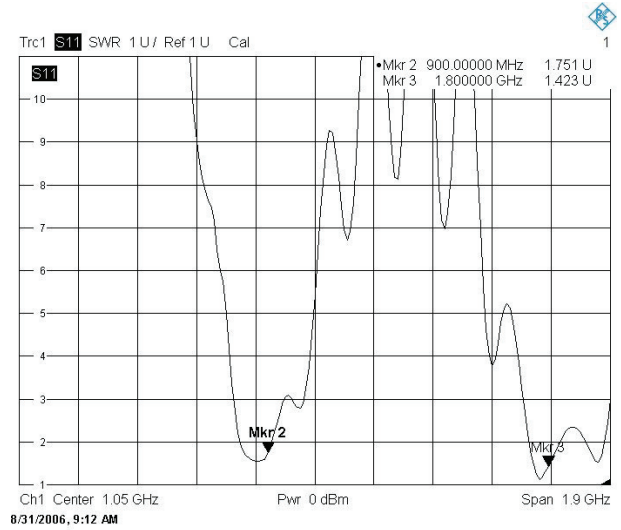
Best.Nr. 17007.868SMA



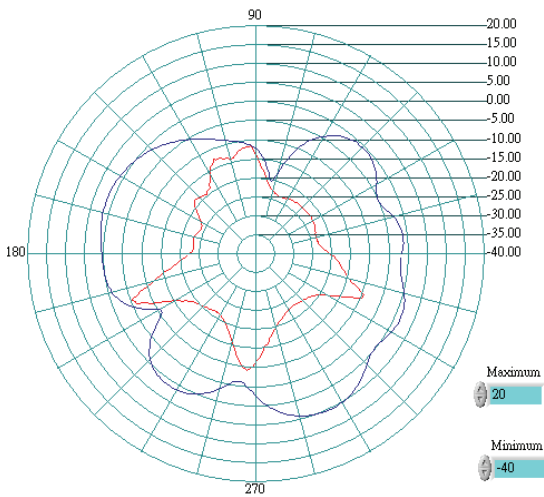
Return Loss



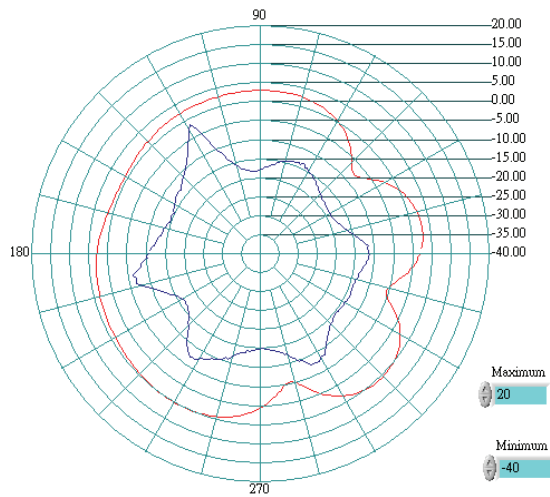
SWR



Pattern E-Plane



Pattern H-Plane



WiMo Antennen und Elektronik GmbH

Am Gäxwald 14, D-76863 Herxheim Tel. (07276) 96680 FAX 9668-11

<http://www.wimo.com>

e-mail: info@wimo.com