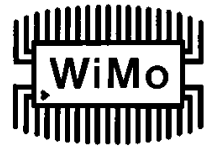


## Stummelantenne (gewinkelt) 2400 MHz

Best.Nr. 17007.(R)SMA

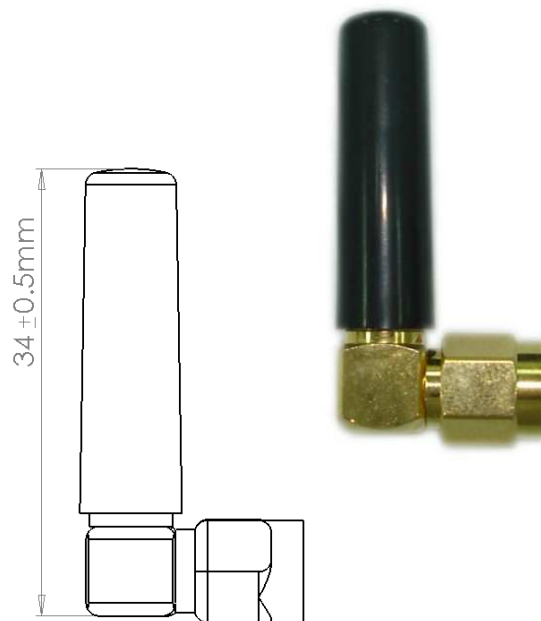


Kleine Stummelantenne für Nahfeldkommunikation im ISM- (868MHz) und GSM-Bereich (900/1800MHz). Geeignet für portable Geräte und Maschinen, klein und unauffällig.

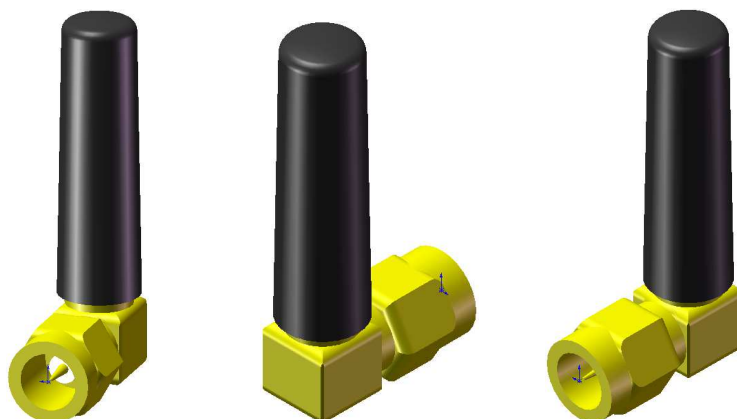
Small stubby antenna for short range communication in industrial environments. Usable for 868/900/1800 MHz (ISM, GSM). Suitable for portable equipment and machines, small and unobtrusive.

### Specifications

|                   |                        |
|-------------------|------------------------|
| Frequency Range   | 2400 - 2483 MHz        |
| VSWR              | ≤ 2.0                  |
| Impedance         | 50Ω                    |
| Gain              | 0dBi                   |
| Polarization      | Vertical               |
| Power Handling    | N/A                    |
| Beam Width        | N/A                    |
| Connector         | SMA MALE / SMA MALE RS |
| Operation Temp.   | -30° ~ +60°            |
| Material          | Radome: PC             |
| Dimension (L*W*H) | 34*8Ø mm               |
| Weight            | 7g ± 1g                |
| Color             | Black                  |
| part no.          | 17007.(R)SMA           |



### 3D views

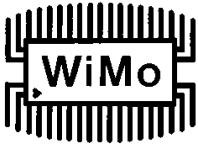


## WiMo Antennen und Elektronik GmbH

Am Gäxwald 14, D-76863 Herxheim Tel. (07276) 96680 FAX 9668-11

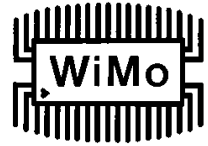
<http://www.wimo.com>

e-mail: [info@wimo.com](mailto:info@wimo.com)

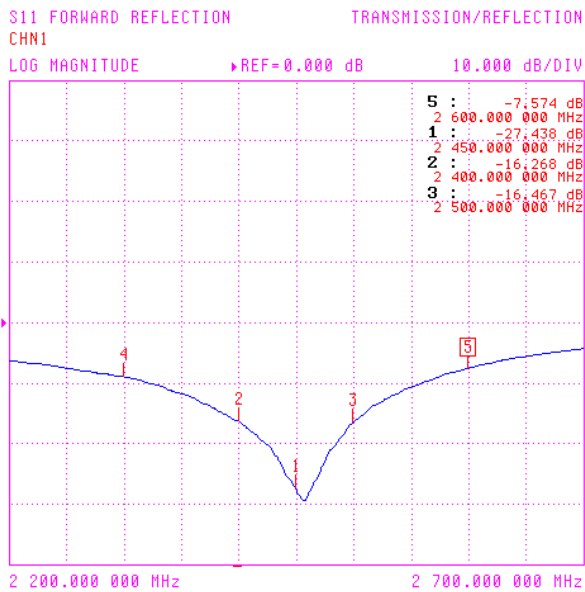


# Stummelantenne (gewinkelt) 2400 MHz

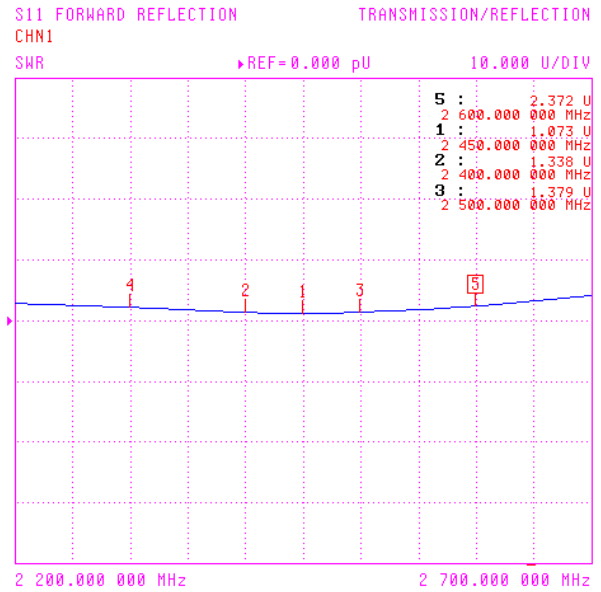
Best.Nr. 17007.(R)SMA



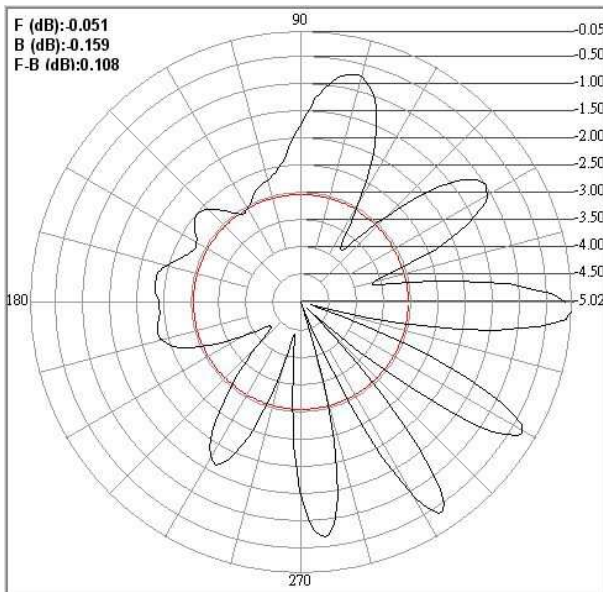
## Return Loss



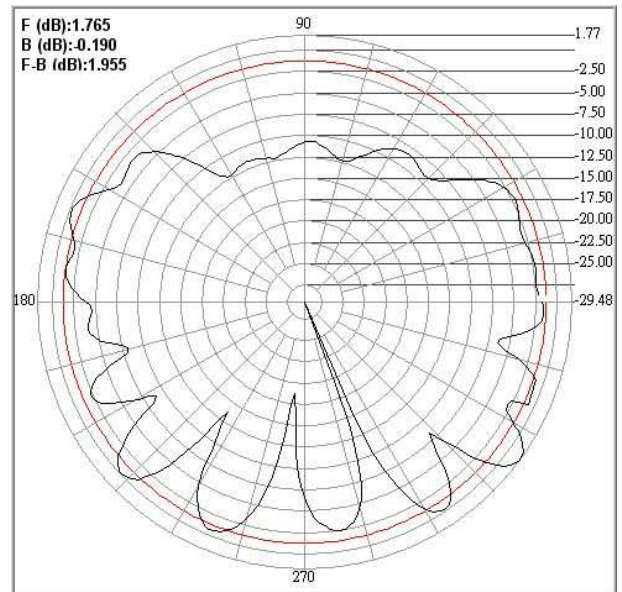
## SWR



## Pattern E-Plane



## Pattern H-Plane



# WiMo Antennen und Elektronik GmbH

Am Gäxwald 14, D-76863 Herxheim Tel. (07276) 96680 FAX 9668-11

<http://www.wimo.com>

e-mail: [info@wimo.com](mailto:info@wimo.com)