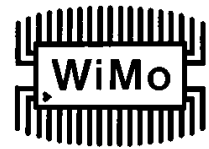


GP2458-10

2.4 / 5 GHz Omnidirectional **dualband** antenna
outdoor, for WLAN / ISM # 18595.10

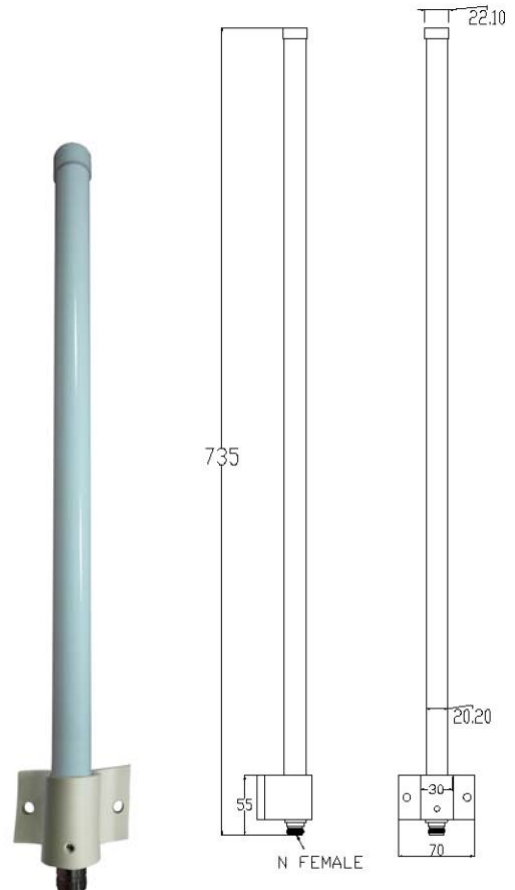


Duoband-Vertikalrundstrahler (Omni-directional) für 2.4 und 5.8 GHz WLAN. Wetterfeste Ausführung für den Aussenbereich, aber auch ideal für die Versorgung von Innenräumen, z.B. im Treppenhaus. Das rostfreie Montagematerial für Mast- und Wandmontage (inkl. Dübel & Schrauben) liegt bei, für Mastdurchmesser von 30 bis 50mm. Farbe weiß, Antennenanschluß N-Buchse.

Dualband omni directional antenna for both 2.4 and 5.8 GHz WiFi wireless LAN. Weatherproof antennas for outdoor use, but also very well suitable for indoor use, e.g. staircases etc. All mounting hardware (stainless steel) for wall or mast mounting (30 - 50mm diameter) is included. White color, Antenna connector is N female.

Technische Daten / specifications

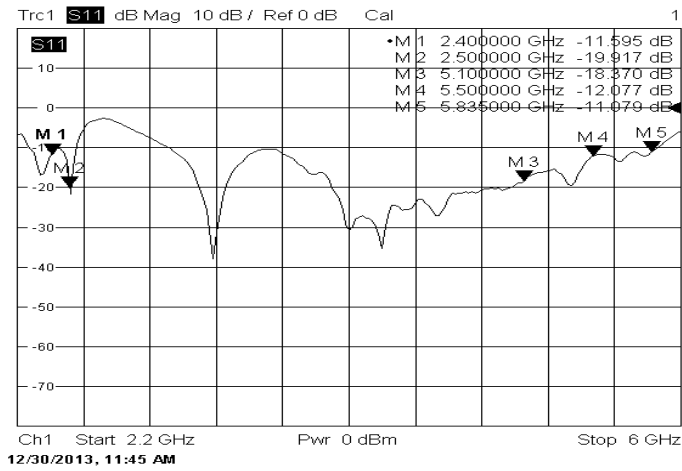
Antennenform type of antenna	Gestockte Dipole stacked dipole array
Frequenzbereich Frequency range	2.4~2.5 / 5.1-5.5 / 5.5-5.833 GHz
Anschluß / Connector	N-Buchse / N female
Impedance	50 Ohm
Polarization	Vertical
Belastbarkeit / Power rating	10 Watt
Gewinn Gain	7/7/10dBi
Öffnungswinkel vertikal vertical beamwidth	13° / 14° / 10°
Gehäuse/ cover	GFK / fibreglass
Halterung / Mount	Edelstahl / Alu Stainless steel / aluminium
Durchmesser / diameter	30.0 mm
Gewicht / weight	370 g
Länge	735 mm
Temp.Range (oper.)	-30 – +60 °C



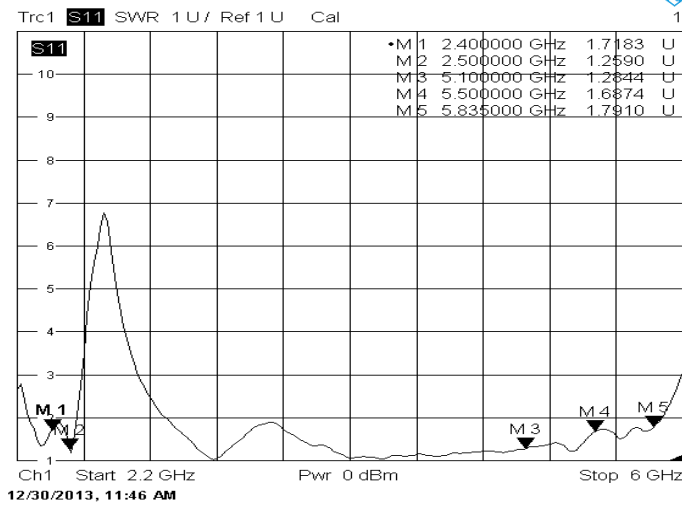
WiMo Antennen und Elektronik GmbH

Am Gäxwald 14, D-76863 Herxheim Tel. (07276) 96680 FAX 9668-11
<http://www.wimo.com> e-mail: info@wimo.com

Return Loss

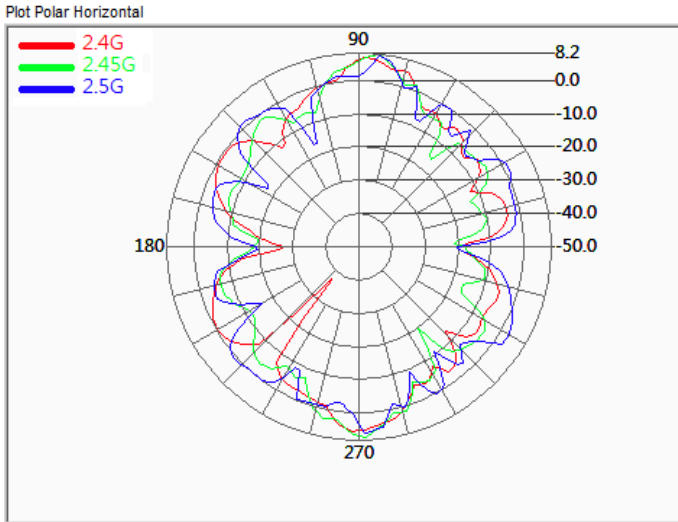


VSWR

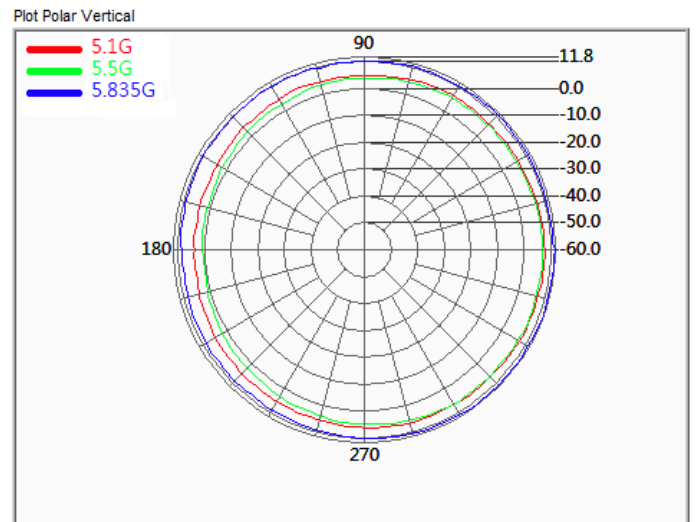
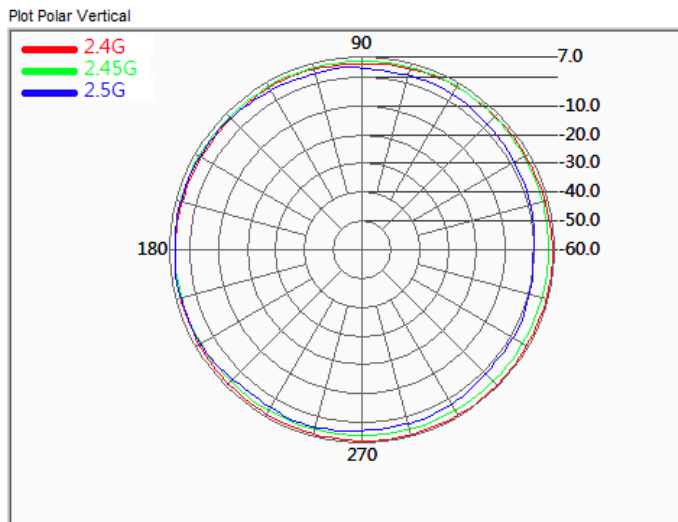
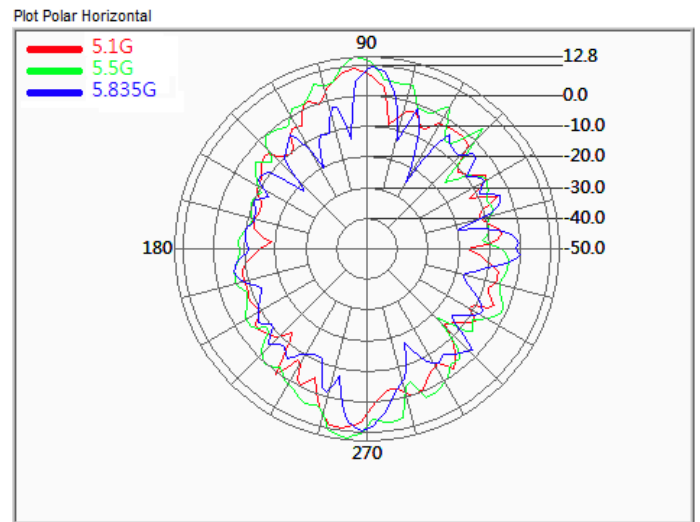


Pattern

2,4 GHz



5 GHz



3D Simulation



WiMo Antennen und Elektronik GmbH

Am Gäxwald 14, D-76863 Herxheim Tel. (07276) 96680 FAX 9668-11
<http://www.wimo.com> e-mail: info@wimo.com