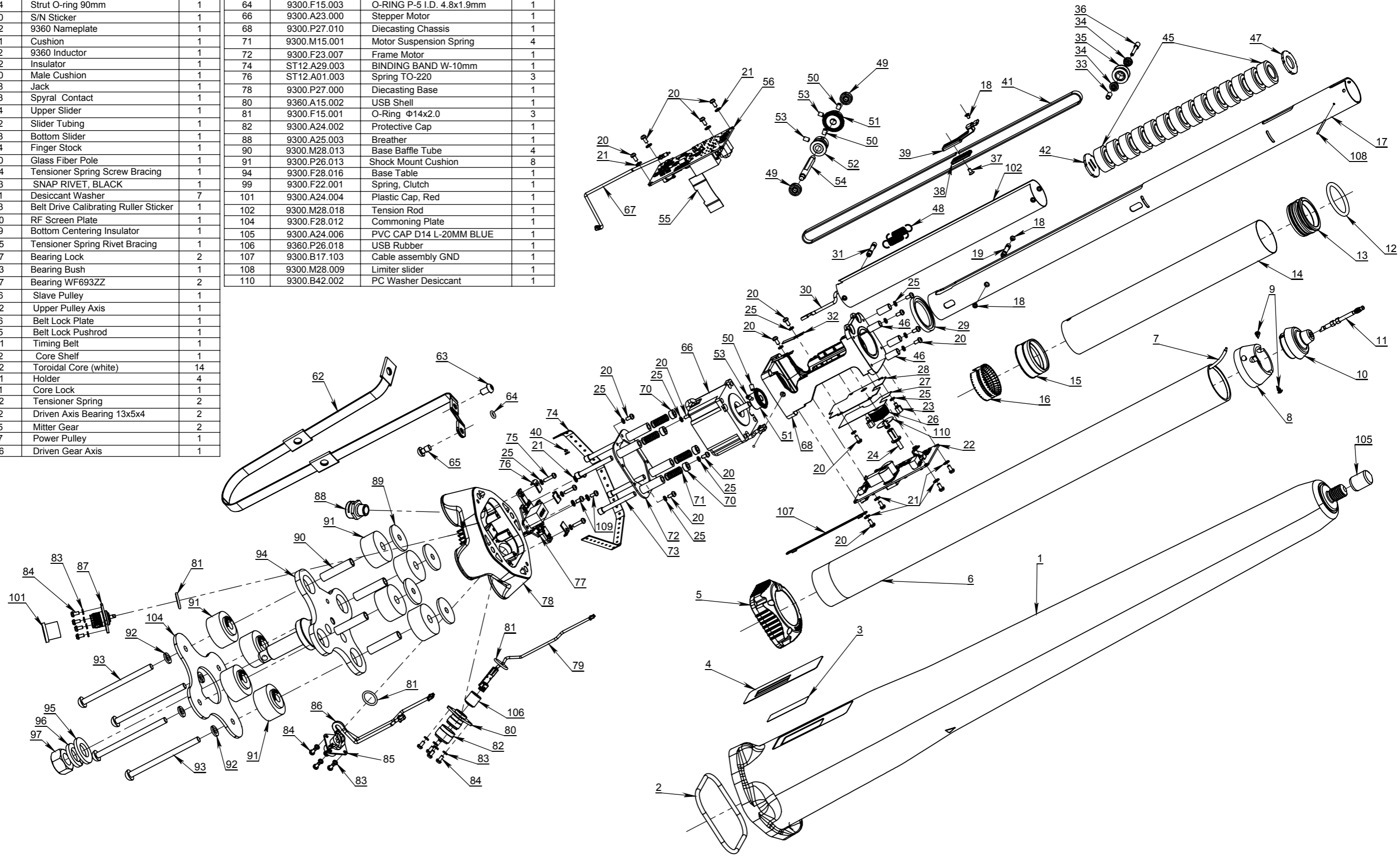


| REF. | STEALTH P/N | DESCRIPTION | QTY |
|------|--------------|---------------------------------------|-----|
| 1 | 9300.P26.000 | Antenna Strut | 1 |
| 2 | 9300.P26.014 | Strut O-ring 90mm | 1 |
| 3 | 9300.P39.010 | S/N Sticker | 1 |
| 4 | 9300.P39.012 | 9360 Nameplate | 1 |
| 5 | 9300.P26.011 | Cushion | 1 |
| 6 | 9360.L16.022 | 9360 Inductor | 1 |
| 8 | 9300.P26.012 | Insulator | 1 |
| 10 | 9300.P26.010 | Male Cushion | 1 |
| 11 | 9300.F28.008 | Jack | 1 |
| 12 | 9300.F28.013 | Spyral Contact | 1 |
| 13 | 9300.F28.004 | Upper Slider | 1 |
| 14 | 9300.F28.002 | Slider Tubing | 1 |
| 15 | 9300.F28.003 | Bottom Slider | 1 |
| 16 | 9300.F28.014 | Finger Stock | 1 |
| 17 | 9300.P03.010 | Glass Fiber Pole | 1 |
| 19 | 9300.M28.034 | Tensioner Spring Screw Bracing | 1 |
| 24 | 9300.A24.003 | SNAP RIVET, BLACK | 1 |
| 26 | 9300.P41.001 | Desiccant Washer | 7 |
| 27 | 9300.P39.013 | Belt Drive Calibrating Ruller Sticker | 1 |
| 28 | 9300.M28.020 | RF Screen Plate | 1 |
| 29 | 9300.P26.009 | Bottom Centering Insulator | 1 |
| 31 | 9300.M28.035 | Tensioner Spring Rivet Bracing | 1 |
| 32 | 9300.M28.037 | Bearing Lock | 2 |
| 33 | 9300.M28.033 | Bearing Bush | 1 |
| 34 | ST12.A25.007 | Bearing WF693ZZ | 2 |
| 35 | 9300.A28.016 | Slave Pulley | 1 |
| 36 | 9300.M28.032 | Upper Pulley Axis | 1 |
| 38 | 9300.F28.006 | Belt Lock Plate | 1 |
| 39 | 9300.F28.005 | Belt Lock Pushrod | 1 |
| 41 | 9300.A26.001 | Timing Belt | 1 |
| 42 | 9300.P19.102 | Core Shelf | 1 |
| 45 | ST12.A03.012 | Toroidal Core (white) | 14 |
| 46 | 9300.M25.011 | Holder | 4 |
| 47 | 9300.P19.101 | Core Lock | 1 |
| 48 | 9300.M15.002 | Tensioner Spring | 2 |
| 49 | 9300.A25.002 | Driven Axis Bearing 13x5x4 | 2 |
| 51 | 9300.F28.015 | Mitter Gear | 2 |
| 52 | 9300.F28.017 | Power Pulley | 1 |
| 54 | 9300.M28.036 | Driven Gear Axis | 1 |

| REF. | STEALTH P/N | DESCRIPTION | QTY |
|------|--------------|---------------------------|-----|
| 62 | 9300.M28.077 | GND RF Return Braid Cable | 1 |
| 64 | 9300.F15.003 | O-RING P-5 I.D. 4.8x1.9mm | 1 |
| 66 | 9300.A23.000 | Stepper Motor | 1 |
| 68 | 9300.P27.010 | Diecasting Chassis | 1 |
| 71 | 9300.M15.001 | Motor Suspension Spring | 4 |
| 72 | 9300.F23.007 | Frame Motor | 1 |
| 74 | ST12.A29.003 | BINDING BAND W-10mm | 1 |
| 76 | ST12.A01.003 | Spring TO-220 | 3 |
| 78 | 9300.P27.000 | Diecasting Base | 1 |
| 80 | 9360.A15.002 | USB Shell | 1 |
| 81 | 9300.F15.001 | O-Ring Φ14x2.0 | 3 |
| 82 | 9300.A24.002 | Protective Cap | 1 |
| 88 | 9300.A25.003 | Breather | 1 |
| 90 | 9300.M28.013 | Base Baffle Tube | 4 |
| 91 | 9300.P26.013 | Shock Mount Cushion | 8 |
| 94 | 9300.F28.016 | Base Table | 1 |
| 99 | 9300.F22.001 | Spring, Clutch | 1 |
| 101 | 9300.A24.004 | Plastic Cap, Red | 1 |
| 102 | 9300.M28.018 | Tension Rod | 1 |
| 104 | 9300.F28.012 | Commoning Plate | 1 |
| 105 | 9300.A24.006 | PVC CAP D14 L-20MM BLUE | 1 |
| 106 | 9360.P26.018 | USB Rubber | 1 |
| 107 | 9300.B17.103 | Cable assembly GND | 1 |
| 108 | 9300.M28.009 | Limiter slider | 1 |
| 110 | 9300.B42.002 | PC Washer Desiccant | 1 |



| REF. | STEALTH P/N | DESCRIPTION | QTY |
|------|--------------|-------------------------|-----|
| 7 | 9300.B17.102 | Wire Top Inductor | 1 |
| 22 | 9310.P19.110 | PCB MC Unit | 1 |
| 30 | 9300.B17.101 | Wire Bottom Inductor | 1 |
| 55 | 9300.P19.011 | RF-CPU FPCB | 1 |
| 56 | 9310.P19.120 | PCB RF Unit | 1 |
| 67 | 9300.B17.001 | RF Cable RG-58 Internal | 1 |
| 77 | 9300.P19.140 | PCB ATT Unit | 1 |
| 79 | 9300.B17.063 | Internal USB cable ASSY | 1 |
| 85 | ST12.A15.074 | Amphenol Connector | 1 |
| 86 | 9300.B17.062 | Interconnect cable ASSY | 1 |
| 87 | ST12.A15.078 | PL259 UHF Connector | 1 |

| REF. | STEALTH P/N | DESCRIPTION | QTY |
|------|--------------|-------------------------------|-----|
| 9 | ST12.A24.042 | Plastic Rivet,Black | 3 |
| 18 | 9300.M25.003 | M2.5x4.5 Ins Torx Screw | 3 |
| 20 | ST12.A24.070 | M3x6 Screw white T-10 | 20 |
| 21 | ST12.A24.020 | M3 Star washer | 11 |
| 23 | ST12.A24.100 | M3x5 Stand Off h6.0 | 2 |
| 25 | ST12.A24.013 | M3 Grover | 15 |
| 37 | 9300.M25.004 | M3x6 Ins Torx Screw | 1 |
| 40 | ST12.A29.010 | Binding Clip A-6B | 1 |
| 50 | ST12.A24.035 | M4x6 Insert Screw | 3 |
| 53 | ST12.A24.037 | M4x5 Insert Screw | 3 |
| 63 | 9300.M25.008 | M6x10 GND Return Braid Screw | 1 |
| 65 | 9300.M25.009 | M6x10.5 Drain Hole Plug Screw | 1 |
| 70 | 9300.M23.002 | Motor Suspension Nut | 4 |

| REF. | STEALTH P/N | DESCRIPTION | QTY |
|------|--------------|---------------------------|-----|
| 73 | 9300.A24.019 | Motor Suspension Bolt | 4 |
| 75 | ST12.A24.053 | M3x12 Screw Torx Pan Head | 3 |
| 83 | ST12.A24.084 | M3 Grover Black | 12 |
| 84 | ST12.A24.077 | M3x6 HD Screw Torx T-30 | 12 |
| 89 | 9300.F28.010 | Base Intermediate Washer | 4 |
| 92 | 9300.M25.000 | Washer Spring 6.5 | 4 |
| 93 | 9300.M24.002 | Secure Bolt M6 | 4 |
| 95 | 9300.M25.014 | M16 Washer | 1 |
| 96 | 9300.M25.015 | M16 Grover | 1 |
| 97 | 9300.M25.013 | M16 Base Nut | 1 |
| 109 | ST12.A24.019 | M3x8 Screw Hex white | 3 |

| | | |
|--|--------------------------------------|------------|
| STEALTH TELECOM WIRELESS COMMUNICATIONS SOLUTIONS P.O. Box 7755, Sharjah, United Arab Emirates Tel.: +971 6 5575586, Fax: +971 6 5575481 www.stealth.ae | Title: 9310 Exploded View | |
| | Dwg/Part No.: 9300.B36.010 | |
| Drawn by: Ihor Mukhtarenkov 18.08.2012 | Checked by: | Size: A3 |
| Approved by: | File Name: 9310_Assembly_Exploded_v2 | Rev.: |
| | | Sheet: 1/1 |